

くまもとだいがく
熊本大学

Kumamoto University

にほんご あんない
日本語クラス案内

Japanese Classes Guidebook

ねん ぜん き
2021年 前期

Spring Semester 2021

だいがくきょういこうかつかんりうんえいきこうふぞく
大学教育統括管理運営機構附属

たげんごぶんかそうごうきょういこう

多言語文化総合教育センター

Center for International Education

Headquarters for Admissions and Education

Contents

To take a Japanese class	3
Class Schedule	4
Level of Japanese Classes	5
Student Status in Kumamoto University	6
Course Registration According to Student Status	8
(2) Special Undergraduate Auditors 【SU-S】 【SU】	9
(4) Graduate Students/Research Students/Others 【G】 【SG】 【R】 【O】	11
(5) Japanese Language Trainees 【N】	14
How to apply	15
Credit	17
Semi-Intensive Japanese Course for <i>Monbukagakusho</i> Scholarship students	
About this course & How to apply	19
Japanese Language Courses for Beginners	
(1) Japanese Language Course for Beginners (at Kurokami area)	20
(2) Japanese Language Course for Beginners (at Honjo area)	21
Grading & Class Hours	22
List of the Japanese Classes	23
Classrooms	24
Timetable	25
List of Instructors	27

To take a Japanese class

※ Japanese Language Proficiency Test

I have never taken Japanese classes at Kumamoto Univ.

I have passed N1 of JLPT※

Take K7-level classes

I have passed N2 of JLPT※

Take K6-level classes

I have passed N3 of JLPT※

Take K5-level classes

I have passed N4 of JLPT※

Take K4-level classes

I have not passed a JLPT※.

Send an email to nihongo@kumamoto-u.ac.jp

I have received an email about my Japanese level for the next semester.

Take classes of your level

I don't know my Japanese level for the next semester.

Send an email to nihongo@kumamoto-u.ac.jp

Read the syllabi and “Japanese Class Guidebook”

The syllabi are written in Japanese and can be found on the Kumamoto Univ. website



Select Japanese classes of your level

Note that procedure and deadlines differ depending on student status.

Check your student status at Kumamoto Univ., then register the class(es)

The dealing of registration for Special Undergraduate Auditors: 4/8 (Thurs.)
Graduate students /Research students: 4/11(Sun.)

Check the time, date and classroom of the first class

The building is #26 on the campus map.



Attend the first class

【Academic Calendar 2021 Spring Semester for Japanese Classes】

andar. Please	Sun	Mon	Tue	Wed	Thu	Fri	Sat	
					1	2	3	
Apr.	4	5	6	7	8	9	10	4/8 : Class Registration Deadline for short-term exchange students 4/11 : Class Registration Deadline for auditors such as graduate students 4/13 : Class Registration Deadline for undergraduate students 4/14 : Class starts 4/29 : No classes (National holiday) 4/30 : No classes
	11	12	13	14	15	16	17	
	18	19	20	21	22	23	24	
	25	26	27	28	29	30		
May.							1	5/3 - 5/5: No classes (National holidays)
	2	3	4	5	6	7	8	
	9	10	11	12	13	14	15	
	16	17	18	19	20	21	22	
	23	24	25	26	27	28	29	
	30	31						
Jun.			1	2	3	4	5	6/16 : No classes (Preliminary Day)
	6	7	8	9	10	11	12	
	13	14	15	16	17	18	19	
	20	21	22	23	24	25	26	
	27	28	29	30				
Jul.					1	2	3	
	4	5	6	7	8	9	10	
	11	12	13	14	15	16	17	
	18	19	20	21	22	23	24	
	25	26	27	28	29	30	31	
Aug.	1	2	3	4	5	6	7	
	8	9	10	11	12	13	14	
	15	16	17	18	19	20	21	
	22	23	24	25	26	27	28	
	29	30	31					



Spring Semester : Apr.14 - Aug.11

— Holiday

Level of Japanese Classes

Japanese classes offered at Kumamoto University are categorized into the following eight levels according to the language proficiency of students.

Level of Japanese proficiency		Students	Contents
K8	Superior	For those who have passed the JLPT N1 with a high score	No Japanese classes! You do not need to take any Japanese classes.
K7	Upper Advanced	For those who have passed the JLPT N1	Beyond the JLPT N1
K6	Lower Advanced	For those who have passed the JLPT N2	The JLPT N1
K5	Upper Intermediate	For those who have passed the JLPT N3	The JLPT N2
K4	Intermediate	For those who have passed the JLPT N4	The JLPT N3
K3	Lower Intermediate	For those who have passed the JLPT N5	The JLPT N4
K2	Upper Elementary	For those who have studied Lower Elementary Japanese	The JLPT N5
K1	Lower Elementary	For those who have will begin studying Japanese for the first time.	Basic Japanese

The level of Japanese proficiency is written in the list of Japanese classes and each syllabus. Please choose the appropriate classes of your Japanese level. It is not recommended to take a class lower than your level.

Student Status

Whether or not you can obtain credits depends on your status in Kumamoto University. How you will register also depends on your status. Please check your status according to the table below.

Symbol of status	Student Status	Description
U	Undergraduate students	Students who passed the entrance examination and who intend to graduate from Kumamoto University
SU-S	Special undergraduate auditors (Short-Term Exchange Program)	Exchange Students <u>in the Short-Term Exchange Program</u> at the undergraduate level from Universities having <u>university exchange agreement</u>
SU-J	Special undergraduate auditors (Japanese Studies Program)	Students in the Japanese Studies Program
SU	Special undergraduate auditors	Exchange Students at the undergraduate level from universities having <u>departmental exchange agreement</u>
G	Graduate students	Students who passed the entrance examination and who intend to graduate from a graduate school of Kumamoto University (including doctoral and master's course students)
SG	Special auditors and special research students in graduate schools	Students in the exchange program <u>at the graduate level</u>
N	Japanese language trainees (<i>Nihongo Kensyuusei</i>)	Students who take the preparatory Japanese language program for six months among Japanese Government (<i>Monbukagakusho</i>) Scholarship Students with embassy recommendation or Teacher-Training Program.
R	Undergraduate research students / graduate research students	Research students who belong to undergraduate /graduate schools
O	Others (researchers, etc.)	Researchers at Kumamoto University (Not students)

Note

- Undergraduate students and special undergraduate auditors (U/SU-S/ SU-J/ SU):
can earn credits for Japanese classes.
- Graduate students, special auditors and special research students in graduate schools, Japanese Language Trainees (*Nihongo kensyuusei*), undergraduate research students and others (G/SG/N/R/O) :
can audit Japanese classes, but cannot earn any credits for Japanese classes.

A guide to selecting Japanese classes according to your student status

***(1) Undergraduate students 【U】**

(2) Special undergraduate auditors 【SU-S】 【SU】

***(3) Special undergraduate auditors for the Japanese Studies
Program 【SU-J】**

**(4) Graduate students, special auditors in graduate school, research
students, and others 【G】 【SG】 【R】 【O】**

(5) Japanese language trainees (*Nihongo Kenshusei*) 【N】

*See a Japanese version for (1) undergraduate students and (3) special undergraduate auditors for the Japanese Studies Program.

(2) Special undergraduate auditors 【SU-S】 【SU】

Special Undergraduate Auditors are

- a) Exchange students in the Short-Term Exchange Program at the undergraduate level from universities having a university exchange agreement 【SU-S】
- b) Exchange students at the undergraduate level from universities having a departmental exchange agreement 【SU】

Please take classes appropriate to your Japanese level. You can earn credits from Japanese classes. There is no difference between “compulsory foreign language subjects” (Japanese A -D) and “elective foreign language subjects” (Japanese III-IV).

▲Note If you are a special auditor / special research student in a graduate school, you cannot gain any credits from Japanese classes. Please refer to “(4) Graduate students, Special Auditors in graduate school, Research students, and others.”

K7 level classes

Level	Course Titles	Course Code	Course Subject	Instructor	Day	Time	Room
K7	Japanese A-1a	A3001	Advanced Oral Expressions II	Kashima	Tue.	3	2A
	Japanese A-2b	A3023	Academic Writing	Koga	Thu.	1	2B
	Japanese A-2b	A3028	Academic Writing	Kashima	Thu.	1	2D
	Japanese B-1a	A3041	Advanced Listening Comprehension & Vocabulary II	Nakamura	Wed.	3	3C
	Japanese B-1b	A3044	Advanced Grammar A II	Koga	Thu.	3	3C
	Japanese C-1a	A3081	Advanced Grammar B II	Kosaka	Mon.	3	3C
	Japanese D-1a	A3123	Advanced Reading A II	Masden	Fri.	2	2D
Japanese D-1b	A3122	Advanced Reading B II	Yoshisato	Thu.	2	2B	

K7	Japanese IV-1w	A3399	Job Hunting in Japan A	Ooba	Mon.	4	2A
	Japanese IV-1x	A3400	Business Writing A	Michimoto	Fri.	4	2C
	Japanese IV-1y	A3401	Business Conversation A	Ooba	Fri.	5	2A
	Japanese IV-1z	A3420	Collaborative Learning with Companies A	Hirano	Thu.	5	2A

K6 level classes

K6	Japanese IV-1f	A3384	Pre-advanced Grammar II	Nakamura	Fri.	3	3C
	Japanese IV-2a	A3411	Pre-advanced Oral Expressions II	Koga	Tue.	1	2A
	Japanese IV-1f	A3386	Pre-advanced Strategic Reading II	Tsuru	Fri.	4	2D
	Japanese IV-2m	A3423	Pre-advanced Introduction to Academic Reading	Kashima	Mon.	2	3C
	Japanese IV-1r	A3397	Pre-advanced Academic Listening Comprehension II	Akaki	Wed.	3	2D
	Japanese IV-2s	A3434	Pre-advanced Writing	Masden	Thu.	4	2C
	Japanese IV-2s	A3435	Pre-advanced Writing	Michimoto	Thu.	3	2D

K6	Japanese IV-1o	A3394	Listening for JLPT N1 A	Tsuru	Wed.	4	3C
	Japanese IV-1p	A3395	Reading for JLPT N1 A	Michimoto	Thu.	4	3C
	Japanese IV-1u	A3398	Comprehensive Japanese for JLPT N1 A	Nakamura	Wed.	2	3C

K5 level classes

K5	Japanese III-1s	A3339	Upper-Intermediate Extensive Reading & Vocabulary II	Yoshisato	Tue.	3	2D
	Japanese III-1h	A3328	Upper-Intermediate Grammar & Expressions II	Akaki	Wed.	2	2D
	Japanese III-1j	A3330	Upper-Intermediate Reading II	Akaki	Thu.	3	2B
	Japanese III-1r	A3338	Upper-Intermediate Listening Comprehension II	Katayama	Thu.	4	2B
	Japanese III-2a	A3351	Intermediate Comprehensive Japanese	Yoshisato	Tue.	2	2B
	Japanese III-2b	A3352		Kashima	Fri.	2	2B
	Japanese III-2t	A3377	Upper-Intermediate Oral Expressions	Ooba	Wed.	4	2A
	Japanese III-2w	A3380	Upper-Intermediate Writing	Yoshisato	Fri.	3	2D

K5	Japanese III-1p	A3336	Introduction to Job Hunting in Japan	Ooba	Wed.	5	2A
----	-----------------	-------	--------------------------------------	------	------	---	----

K4 level classes

K4	Japanese II-1h	A3267	Intermediate Listening Comprehension II	Katayama	Thu.	3	3B
	Japanese II-2i	A3303	Intermediate Grammar	Kosaka	Mon.	2	2D

4) Graduate students, special auditors /special research students in graduate school, research students, and others **【G】 【SG】 【R】 【O】**

This section applies to the following students or researchers:

- a) Graduate students who belong to master's or doctoral program **【G】**
- b) Special Auditors /Special Research students in graduate school are students in the exchange program at the graduate level **【SG】**
- c) Research student at the graduate level **【R】**
- d) Research student at undergraduate level **【R】**
- e) Others (researchers, etc.) **【O】**

Please take classes appropriate to your Japanese level. Please note that you cannot earn any credits from Japanese classes.

How to apply for Japanese classes:

Download an “Application form for Auditing Japanese Classes” and fill it out, then submit it to nihongo@kumamoto-u.ac.jp

K7 level classes

Level	Course Titles	Course Code	Course Subject	Instructor	Day	Time	Room
K7	Japanese A-1a	A3001	Advanced Oral Expressions II	Kashima	Tue.	3	2A
	Japanese A-2b	A3023	Academic Writing	Koga	Thu.	1	2B
	Japanese A-2b	A3028	Academic Writing	Kashima	Thu.	1	2D
	Japanese B-1a	A3041	Advanced Listening Comprehension & Vocabulary II	Nakamura	Wed.	3	3C
	Japanese B-1b	A3044	Advanced Grammar A II	Koga	Thu.	3	3C
	Japanese C-1a	A3081	Advanced Grammar B II	Kosaka	Mon.	3	3C
	Japanese D-1a	A3123	Advanced Reading A II	Masden	Fri.	2	2D
	Japanese D-1b	A3122	Advanced Reading B II	Yoshisato	Thu.	2	2B

K7	Japanese IV-1w	A3399	Job Hunting in Japan A	Ooba	Mon.	4	2A
	Japanese IV-1x	A3400	Business Writing A	Michimoto	Fri.	4	2C
	Japanese IV-1y	A3401	Business Conversation A	Ooba	Fri.	5	2A
	Japanese IV-1z	A3420	Collaborative Learning with Companies A	Hirano	Thu.	5	2A

K6 level classes

K6	Japanese IV-1f	A3384	Pre-advanced Grammar II	Nakamura	Fri.	3	3C
	Japanese IV-2a	A3411	Pre-advanced Oral Expressions II	Koga	Tue.	1	2A
	Japanese IV-1f	A3386	Pre-advanced Strategic Reading II	Tsuru	Fri.	4	2D
	Japanese IV-2m	A3423	Pre-advanced Introduction to Academic Reading	Kashima	Mon.	2	3C
	Japanese IV-1r	A3397	Pre-advanced Academic Listening Comprehension II	Akaki	Wed.	3	2D
	Japanese IV-2s	A3434	Pre-advanced Writing	Masden	Thu.	4	2C
	Japanese IV-2s	A3435	Pre-advanced Writing	Michimoto	Thu.	3	2D

K6	Japanese IV-1o	A3394	Listening for JLPT N1 A	Tsuru	Wed.	4	3C
	Japanese IV-1p	A3395	Reading for JLPT N1 A	Michimoto	Thu.	4	3C
	Japanese IV-1u	A3398	Comprehensive Japanese for JLPT N1 A	Nakamura	Wed.	2	3C

K5 level classes

K5	Japanese III-1s	A3339	Upper-Intermediate Extensive Reading & Vocabulary II	Yoshisato	Tue.	3	2D
	Japanese III-1h	A3328	Upper-Intermediate Grammar & Expressions II	Akaki	Wed.	2	2D
	Japanese III-1j	A3330	Upper-Intermediate Reading II	Akaki	Thu.	3	2B
	Japanese III-1r	A3338	Upper-Intermediate Listening Comprehension II	Katayama	Thu.	4	2B
	Japanese III-2a	A3351	Intermediate Comprehensive Japanese	Yoshisato	Tue.	2	2B
	Japanese III-2b	A3352		Kashima	Fri.	2	2B
	Japanese III-2t	A3377	Upper-Intermediate Oral Expressions	Ooba	Wed.	4	2A
	Japanese III-2w	A3380	Upper-Intermediate Writing	Yoshisato	Fri.	3	2D

K5	Japanese III-1p	A3336	Introduction to Job Hunting in Japan	Ooba	Wed.	5	2A
----	-----------------	-------	--------------------------------------	------	------	---	----

K4 level classes

K4	Japanese II-1h	A3267	Intermediate Listening Comprehension II	Katayama	Thu.	3	3B
	Japanese II-2i	A3303	Intermediate Grammar	Kosaka	Mon.	2	2D

日本語クラス聴講届 (記入例 Example)

Application Form for Auditing Japanese Classes

クラス定員等により、聴講が認められない授業もあります。 Due to class size limitations, applications are subject to approval.

所属:	●学部(Undergraduate Schools)
Affiliation	<input type="checkbox"/> 文学部(Letters) <input type="checkbox"/> 教育学部(Education) <input type="checkbox"/> 法学部(Law) <input type="checkbox"/> 理学部(Science) <input type="checkbox"/> 医学部(Medicine) <input type="checkbox"/> 薬学部(Pharmaceutical Sciences) <input type="checkbox"/> 工学部(Engineering)
1つに☑	●大学院(Graduate Schools)
	<input type="checkbox"/> 社会文化科学教育部(Social and Cultural Sciences) <input type="checkbox"/> 教育学研究部(Education) <input type="checkbox"/> 保健学教育部(Health Sciences) <input checked="" type="checkbox"/> 自然科学教育部(Science and Technology) <input type="checkbox"/> 医学教育部(Medical Sciences) <input type="checkbox"/> 薬学教育部(Pharmaceutical Sciences)
学生区分:	<input type="checkbox"/> 大学院学生(Regular Student at Graduate School) <input type="checkbox"/> 学部研究生(Research Student at Undergraduate School)
Status	<input checked="" type="checkbox"/> 大学院研究生(Research Student at Graduate School) <input type="checkbox"/> 大学院特別聴講学生(Special Auditor at Graduate School)
1つに☑	<input type="checkbox"/> 特別研究学生(Special Research Student) <input type="checkbox"/> 研究員(Researcher) <input type="checkbox"/> その他(Others) []
あなたの日本語レベル:	Your Japanese Proficiency
1つに☑	<input checked="" type="checkbox"/> K7(上級 Advanced) <input type="checkbox"/> K6(中上級 Pe-advanced) <input type="checkbox"/> K5(中級後半 Upper-Intermediate) <input type="checkbox"/> K4(中級前半 Intermediate)
E-mail:	wukong@kumamoto-u.ac.jp

▼あなたの日本語レベルの授業から受講したい科目を選んで、その科目の横に、あなた学生番号と名前を書いてください。

Select the course(s) you wish to take from among the courses of your Japanese level.

Then write your student number and your name in the blank spaces of the course(s) you have chosen as shown in the example below.

レベル	曜日	時限	時間コード	授業科目名	教員	授業テーマ	学生番号 Student ID	名前 Name 漢字/alphabet	カタカナ
例 Example	月	1	***	日本語 XXXX	XXXXX	XXXXXXXXX → Example	205e2225	王 心悦/Wang Xinyue	ワン・シンユエ
K7	火	3	A3001	日本語 A-1a	鹿嶋	上級 口頭表現 II			
K7	木	1	A3023	日本語 A-2b	古賀	上級 レポート作成法			
K7	木	1	A3028	日本語 A-2b	鹿嶋	上級 レポート作成法	219d0001	孫 悟空 Sun Wukong	ソン ゴクウ
K7	水	3	A3041	日本語 B-1a	中村	上級 聴解・語彙 II			
K7	木	3	A3044	日本語 B-1b	古賀	上級 文法 A II			
K7	月	3	A3081	日本語 C-1a	小坂	上級 文法 B II			
K7	金	2	A3123	日本語 D-1a	マスデン	上級 読解 A II			
K7	木	2	A3122	日本語 D-1b	吉里	上級 読解 B II	219d0001	孫 悟空 Sun Wukong	ソン ゴクウ
K7	月	4	A3399	日本語IV-1w	大庭	ビジネス日本語 就活実践 A			
K7	金	4	A3400	日本語IV-1x	道本	ビジネス日本語ライティング A			
K7	月	5	A3401	日本語IV-1y	大庭	ビジネス日本語 会話 A			
K7	木	5	A3402	日本語IV-1z	平野	ビジネス日本語企業協働学習A			

K6	金	3	A3384	日本語IV-1d	中村	中上級 文法 II			
K6	火	1	A3411	日本語IV-2a	古賀	中上級口頭表現			
K6	金	4	A3386	日本語IV-1f	津留	中上級 ストラテジー読解 II			
K6	月	2	A3423	日本語IV-2m	鹿嶋	中上級 論文読解入門			
K6	水	3	A3397	日本語IV-1r	赤木	中上級 アカデミック聴解 II			
K6	木	3	A3434	日本語IV-2s	マスデン	中上級作文			
K6	木	3	A3435	日本語IV-2s	道本	中上級作文			
K6	水	4	A3394	日本語IV-1o	津留	キャリア日本語 N1 聴解 A			
K6	木	4	A3395	日本語IV-1p	道本	キャリア日本語 N1 読解 A			
K6	水	2	A3398	日本語IV-1u	中村	キャリア日本語 N1 総合 A			

K5	火	3	A3339	日本語III-1s	吉里	中級後半 多読・語彙 II			
K5	水	2	A3328	日本語III-1h	赤木	中級後半 文法 II			
K5	木	3	A3330	日本語III-1j	赤木	中級後半 読解 II			
K5	木	4	A3338	日本語III-1r	片山	中級後半 聴解 II			
K5	火	2	A3351	日本語III-2a	吉里	中級後半 総合			
K5	水	3	A3352	日本語III-2b	鹿嶋	中級後半 総合			
K5	水	4	A3377	日本語III-2t	大庭	中級後半 口頭表現			
K5	金	3	A3380	日本語III-2w	吉里	中級後半 作文			
K5	水	5	A3336	日本語III-1p	大庭	ビジネス日本語入門 A			

K4	木	3	A3267	日本語II-1h	片山	中級前半 聴解 II			
K4	月	2	A3303	日本語II-2i	小坂	中級前半 文法			

◆ この聴講届の送付先: nihongo@kumamoto-u.ac.jp

Please send this form to:

(5) Japanese Language Trainees (*Nihongo Kensyuhusei*) 【N】

Japanese language trainees are students who have passed the examination offered at Japanese embassies of their countries and will enroll in the preparatory six-month Japanese language course.

There are two categories:

- a) Japanese government (*Monbukagakusho*) scholarship students with embassy recommendations
- b) Teacher-training students

If your Japanese level is elementary (K1-K3), please take Semi-Intensive Japanese Course for *Monbukagakusho* scholarship students.

If your Japanese level is intermediate or higher, please consult with a Japanese teacher.

Please note that you cannot earn any credits from Japanese classes.

How to Apply for Japanese Classes

Procedures and deadlines differ depending on student status.

1) **Undergraduate students and Special Undergraduate Auditors** can earn credits for Japanese classes.

- **Undergraduate students 【U】**

Please register using SOSEKI by April 13 (Tue.)

- **Special undergraduate auditors 【SU-S】 (Short-Term Exchange Program)**

Please submit your Class Registration Form to the International Student Office by April 8 (Thurs.)

- **Special undergraduate auditors 【SU】**

Please attend the guidance of your faculty.

- **Special undergraduate auditors 【SU-J】**

Please follow the guidance of International Student Office.

2) **Graduate students, Special auditors in graduate school, Japanese Language Trainees, Research students and Others 【G, SG, N, R, O】**

may audit Japanese classes if space permits but cannot earn credits for these classes.

Please download and fill out the form of Registration for Auditing Japanese Classes from the website of Center for International Education. Then send it to

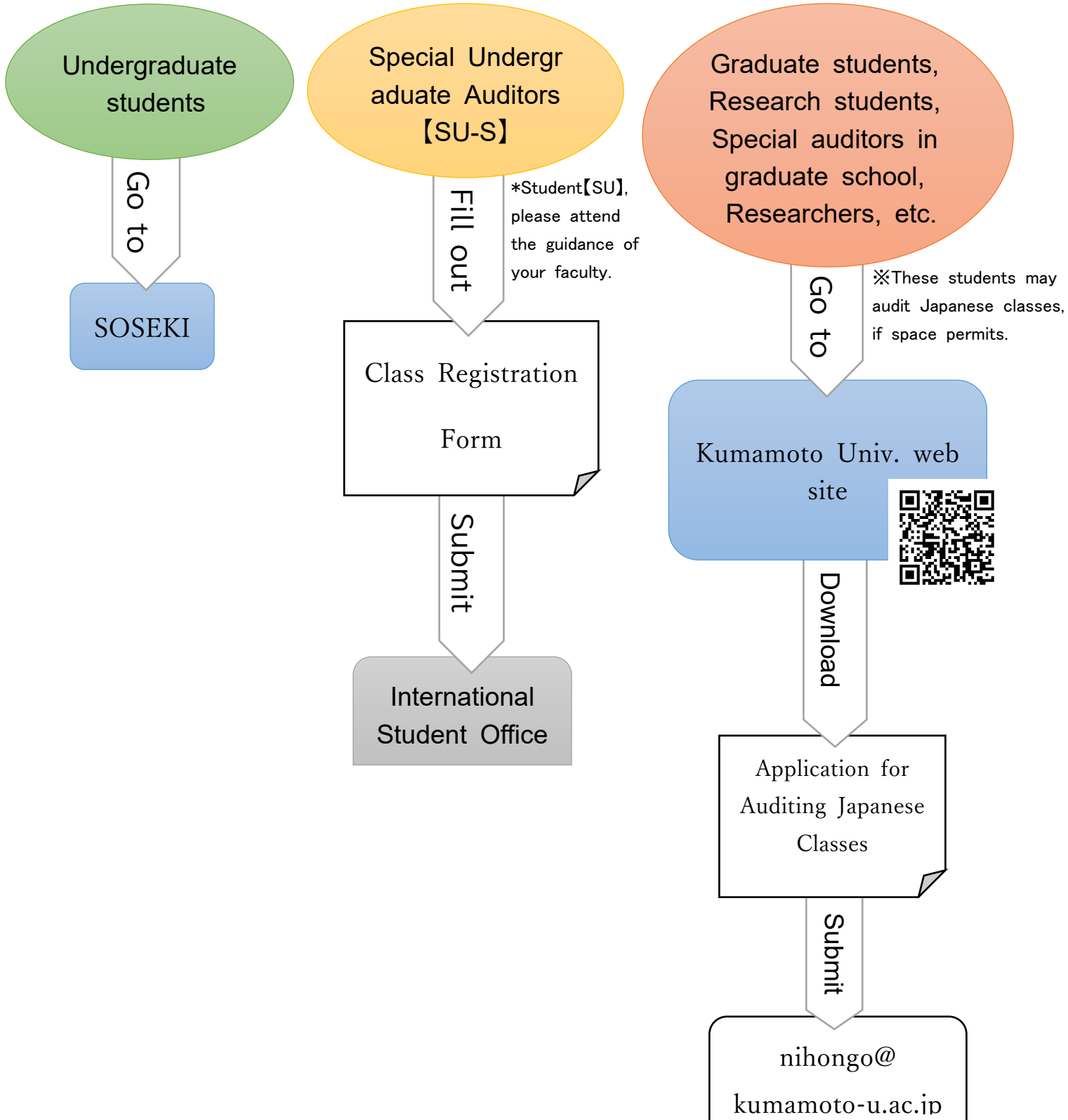
nihongo@kumamoto-u.ac.jp by April 11 (Sun.)

Attention

- Please access Portal on the Kumamoto University website to read the syllabi of the classes you have signed up for.

- Students who fail to attend the first class without notifying the instructor may be removed from the roster.

How to apply for Japanese



Credit

Regular Students in Undergraduate School 【U】

Undergraduate students who need Japanese language course credits for their Compulsory Foreign Language subject requirements should complete the credits required for graduation within their first two years. Even if you take more Compulsory Foreign Language subjects are required, those credits will not count toward your graduation requirements. Credits obtained from Elective Foreign Language subjects will count toward your graduation requirements for elective classes. However, it is not possible to take a course that is a lower level than the result of your placement test.

Special Undergraduate Auditors 【SU-S】 【SU】 【SU-J】

There is no distinction between Compulsory Foreign Language subjects and Elective Foreign Language subjects. Both will count toward your program completion requirements.

Graduate Students, Special Auditors and Special Research Students in Graduate School, Japanese Language Trainees (*Nihongo Kensyuu Sei*), Undergraduate Reserch Students / Graduate Research Students 【G】 【SG】 【N】 【R】 【O】

You may audit courses that correspond to your Japanese level, but you may not receive credit for them.

About Semi-Intensive Japanese Course for *Monbukagakusho* scholarship students

Aim:

This course is to help Japanese language trainees [N], that is, Japanese government (*Monbukagakusho*) scholarship students with an embassy recommendation to acquire basic Japanese skills before they start studying as graduate students at Kumamoto University.

Who can take this course:

In principle only Japanese language trainees [N], that is, Japanese government (*Monbukagakusho*) scholarship students with an embassy recommendation can take this course. However, regular graduate students [G] with a Japanese ability level between K1 and K3 who wish to find employment in Japan in the future may be allowed to take these courses based on the results of an interview and test.

Credits & Grades: No academic credits nor grades will be awarded for these courses.

Class Schedule:

Elementary course 1: K1 level

<u>Day of the week</u>	<u>Class time</u>	<u>Instructors</u>
Monday	10:25~11:55	Ms.Ezaki
Wednesday	10:25~11:55	Ms.Ezaki
Thursday	10:25~11:55	Ms.Yonawa

Elementary course 2: K2-K3 levels

<u>Day of the week</u>	<u>Class time</u>	<u>Instructors</u>
Tuesday	10:25~11:55	Ms.Hinokuma
Tuesday	12:55~14:25	Ms.Hinokuma
Friday	12:55~14:25	Ms.Sadanaga

Textbook: Textbooks and the class schedules will be distributed on the first day of class.

The day class starts:

Class will start on April 14 (Wednesday) for course 1, and on April 16 (Friday) for course 2.

How to apply

※Only regular graduate students [G] whose Japanese level is K1, K2 or K3 can apply for this course.

① **Download “Application for Intensive Japanese Course” from the Center for International Education website.**



② **Fill in the application form and submit it to nihongo@kumamoto-u.ac.jp.**

*The email subject of mail: Semi-Intensive Japanese Course

Please write your name and student ID number in the body of the email.

The deadline: April 11 (Sunday)



③ **Attend a guidance session and take an interview.**

Time: 15:00 p.m. on April 9 (Friday)

Place: Classroom 2A

*After your attending the following guidance, we will send you an email telling if you can audit or not.

Japanese Language Program for Beginners (Kurokami campus)

Aim: This course helps the students to obtain the basic Japanese skills required for daily life in Japan.

Who can take this course: Students and researchers of Kumamoto University and their spouses

Textbook: “Irodori: Japanese for Life in Japan Starter(A1)” The Japan Foundation

Please download the textbook from the website below.

<https://www.irodori.jpf.go.jp/starter/pdf.html>

Level of Japanese proficiency: K1 (lower elementary)

This program is divided into two sections. The first section is for students who have never studied Japanese before. It will begin with *hiranaga* and *katakata*.

The second section is for those who have finished the first section, or those who already have the equivalent Japanese ability. A test is required for students wishing to attend the second section, and only those who pass the test may join the second section.

Credits & Grades: No academic credits nor grades will be awarded for these courses.

Class Schedule:

Classes are held 2 or 3 times a week.

In the middle of April, class times and classrooms will be announced on the Center for International Education website.

(Japanese)URL www.c3.kumamoto-u.ac.jp

(English)URL <http://www.c3.kumamoto-u.ac.jp/en/>

How to apply:

Apply online for Japanese Language Course for Beginners on the Center for International Education website.

URL <http://www.c3.kumamoto-u.ac.jp/en/>

Contact information for inquiries:

Email: gji-ryugaku@jimu.kumamoto-u.ac.jp (International Student Office)

Japanese Language Course for Beginners (Honjyo campus)

Aim:

This course helps the students to obtain the basic Japanese skills required for daily life in Japan.

Who can take this course:

Students, researchers of Honjyo campus at Kumamoto University and their spouses. Please note that this course is for those who have already gained the basic skills of Japanese. (If you are going to start studying Japanese, please take Japanese Language course for beginners at Kurokami campus.)

Credits & Grades:

No academic credits nor grades will be awarded for these courses.

Class Schedule:

Classes in this course will meet once a week.

The syllabus will be distributed on the first day of the class.

*Please note class times, contents and application methods differ from those of the Japanese Language Course for Beginners at Kurokami campus.

How to apply:

Those wishing to attend this course must first attend an orientation. You may apply for the course at this orientation;

Orientation

In the middle of May (tentatively). The exact time and place of the orientation has yet to be decided.

They will be announced on the Center for International Education website in the middle of April.

(Japanese)URL www.c3.kumamoto-u.ac.jp

(English)URL <http://www.c3.kumamoto-u.ac.jp/en/>

Contact information for inquiries:

Email : gji-ryugaku@jimu.kumamoto-u.ac.jp (International Student Office)

Grading

Only Undergraduate Students **【U】** and Special Undergraduate Auditors **【SU-S】 【SU】 【SU-J】** who need credits can receive grades.

Judgement	Pass				Failure [F]
Evaluation	Excellent [AA]	Very Good [A]	Good [B]	Fair [C]	
Score (out of 100)	100–90	89–80	79–70	69–60	59–0

Note that students who attend less than two-thirds of the classes cannot receive any credits.

Class Hours

1st period: 8:40 - 10:10

2nd period: 10:25 - 11:55

3rd period: 12:55 - 14:25

4th period: 14:40 - 16:10

5th period: 16:25 - 17:55

List of Japanese Classes

※For undergraduate students, Japanese A - D are compulsory and Japanese I - IV are elective foreign language subjects.

【Japanese Language Subjects】

Level	Course Titles	Course Code	Course Subject	Instructor	Day	Time	Room
K7	Japanese A-1a	A3001	Advanced Oral Expressions II	Kashima	Tue.	3	2A
	Japanese A-2b	A3023	Academic Writing	Koga	Thu.	1	2B
	Japanese A-2b	A3028	Academic Writing	Kashima	Thu.	1	2D
	Japanese B-1a	A3041	Advanced Listening Comprehension & Vocabulary II	Nakamura	Wed.	3	3C
	Japanese B-1b	A3044	Advanced Grammar A II	Koga	Thu.	3	3C
	Japanese C-1a	A3081	Advanced Grammar B II	Kosaka	Mon.	3	3C
	Japanese D-1a	A3123	Advanced Reading A II	Masden	Fri.	2	2D
	Japanese D-1b	A3122	Advanced Reading B II	Yoshisato	Thu.	2	2B
K6	Japanese IV-1f	A3384	Pre-advanced Grammar II	Nakamura	Fri.	3	3C
	Japanese IV-2a	A3411	Pre-advanced Oral Expressions II	Koga	Tue.	1	2A
	Japanese IV-1f	A3386	Pre-advanced Strategic Reading II	Tsuru	Fri.	4	2D
	Japanese IV-2m	A3423	Pre-advanced Introduction to Academic Reading	Kashima	Mon.	2	3C
	Japanese IV-1r	A3397	Pre-advanced Academic Listening Comprehension II	Akaki	Wed.	3	2D
	Japanese IV-2s	A3434	Pre-advanced Writing	Masden	Thu.	4	2C
	Japanese IV-2s	A3435	Pre-advanced Writing	Michimoto	Thu.	3	2D
K5	Japanese III-1s	A3339	Upper-Intermediate Extensive Reading & Vocabulary II	Yoshisato	Tue.	3	2D
	Japanese III-1h	A3328	Upper-Intermediate Grammar & Expressions II	Akaki	Wed.	2	2D
	Japanese III-1j	A3330	Upper-Intermediate Reading II	Akaki	Thu.	3	2B
	Japanese III-1r	A3338	Upper-Intermediate Listening Comprehension II	Katayama	Thu.	4	2B
	Japanese III-2a	A3351	Intermediate Comprehensives Japanese	Yoshisato	Tue.	2	2B
	Japanese III-2b	A3352		Kashima	Fri.	2	2B
	Japanese III-2t	A3377	Upper-Intermediate Oral Expressions	Ooba	Wed.	4	2A
	Japanese III-2w	A3380	Upper-Intermediate Writing	Yoshisato	Fri.	3	2D
K4	Japanese II-1h	A3267	Intermediate Listening Comprehension II	Katayama	Thu.	3	3B
	Japanese II-2i	A3303	Intermediate Grammar	Kosaka	Mon.	2	2D

【Business Japanese・Classes preparing for JLPT(Japanese Language Proficiency Test)】

※The capacity of Japanese IV-1w, IV-1x, IV-1y, IV-1z and III-1p are fixed. Please refer to the syllabus for details.

K7	Japanese IV-1w	A3399	Job Hunting in Japan A	Ooba	Mon.	4	2A
	Japanese IV-1x	A3400	Business Writing A	Michimoto	Fri.	4	2C
	Japanese IV-1y	A3401	Business Conversation A	Ooba	Fri.	5	2A
	Japanese IV-1z	A3420	Collaborative Learning with Companies A	Hirano	Thu.	5	2A
K6	Japanese IV-1o	A3394	Listening for JLPT N1 A	Tsuru	Wed.	4	3C
	Japanese IV-1p	A3395	Reading for JLPT N1 A	Michimoto	Thu.	4	3C
	Japanese IV-1u	A3398	Comprehensive Japanese for JLPT N1 A	Nakamura	Wed.	2	3C
K5	Japanese III-1p	A3336	Introduction to Job Hunting in Japan	Ooba	Wed.	5	2A

Classroom

General Education Building is located at Kurokami North campus.

Campus map

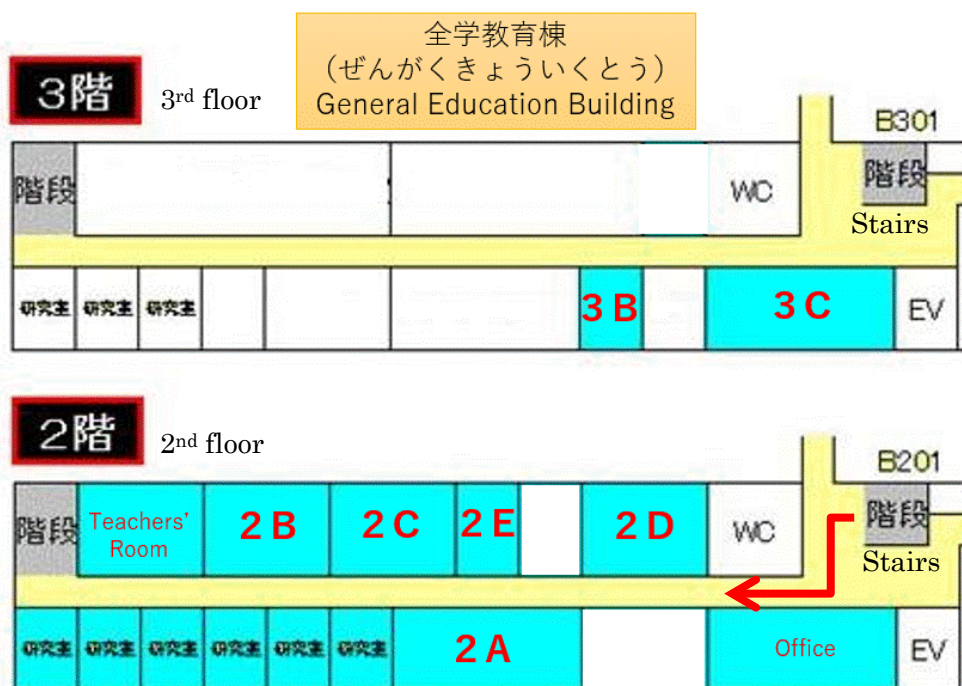


▶ Eng. Version

Kurokami North E1 (General Education Building)

Blue zone

<https://ewww.kumamoto-u.ac.jp/en/about/access/campus/>



時間割 / Timetable

		1限(8:40-10:10)					2限(10:25-11:55)				
	レベル	授業科目名	授業テーマ	担当教員	教室	レベル	授業科目名	授業テーマ	担当教員	教室	
	Level	Course Title	Course Subject	Instructor	Classroom	Level	Course Title	Course Subject	Instructor	Classroom	
月	K2	BJ-2-1	初級 A Intensive Japanese A	鹿嶋 Kashima	2A	K1	BJ-1-1	初級 1 Intensive Japanese 1	江崎 Ezaki	2A	
						K4	II-2i	中級前半文法	小坂	2D	
						K6	IV-2m	中上級論文読解入門	鹿嶋	3C	
Mon											
火	K2	BJ-2-2	初級 B Intensive Japanese B	吉里 Yoshisato	2E	K1	BJ-1-2	初級 2 Intensive Japanese 2	日隈 Hinokuma	2A	
	K6	IV-2a	中上級口頭表現	古賀	2A	K5	III-2a	中級後半総合	吉里	2B	
Tue											
水	K2	BJ-2-3	初級 C Intensive Japanese C	鹿嶋 Kashima	2A	K1	BJ-1-4	初級 4 Intensive Japanese 4	江崎 Ezaki	2A	
						K5	III-1h	中級後半文法 II	赤木	2D	
						K6	IV-1u	キャリア日本語 N1 総合 A	中村	3C	
Wed											
木	K2	BJ-2-4	初級 D Intensive Japanese D	吉里 Yoshisato	2A	K1	BJ-1-5	初級 5 Intensive Japanese 5	與繩 Yonawa	2A	
	K7	A-2b	上級レポート作成法	古賀	2B	K7	D-1b	上級読解 B II	吉里	2B	
	K7	A-2b	上級レポート作成法	鹿嶋	2D						
Thu											
金	K2	BJ-2-5	初級 E Intensive Japanese E	マスデン Masden	2A	K1	BJ-1-6	初級 6 Intensive Japanese 6	定永 Sadanaga	2A	
						K7	D-1a	上級読解 AII	マスデン	2D	
Fri											

3限(12:55-14:25)					4限(14:40-16:10)					5限(16:25-17:55)				
レベル	授業科目名	授業テーマ	担当教員	教室	レベル	授業科目名	授業テーマ	担当教員	教室	レベル	授業科目名	授業テーマ	担当教員	教室
Level	Course Title	Course Subject	Instructor	Classroom	Level	Course Title	Course Subject	Instructor	Classroom	Level	Course Title	Course Subject	Instructor	Classroom
K7	C-1a	上級文法 BII	小坂	3C	K7	IV-1w	ビジネス日本語 就活実践A	大庭	2A	K7	IV-1y	ビジネス日本語 会話A	大庭	2A
K1	BJ-1-3	初級 3 Intensive Japanese 3	日隈 Hinokuma	2E										
K5	III-1s	中級後半多読・語彙 II	吉里	2D										
K7	A-1a	上級口頭表現 II	鹿嶋	2A										
K5	III-2b	中級後半総合	鹿嶋	2B	K5	III-2t	中級後半口頭表現	大庭	2A	K5	III-1p	ビジネス日本語入門 A	大庭	2A
K6	IV-1r	中上級聴解 II	赤木	2D	K6	IV-1o	キャリア日本語N1聴解 A	津留	3C					
K7	B-1a	上級聴解・語彙 II	中村	3C										
K4	II-1h	中級前半聴解 II	片山	3B	K5	III-1r	中級後半聴解 II	片山	2B	K7	IV-1z	ビジネス日本語企業協働学習 A	平野	2A
K5	III-1j	中級後半読解 II	赤木	2B	K6	IV-1p	キャリア日本語N1読解 A	道本	3C					
K6	IV-2s	中上級作文	マスデン	2C			日研生クラス	マスデン	2D					
K6	IV-2s	中上級作文	道本	2D										
K7	B-1b	上級文法 AII	古賀	3C										
K6	IV-1d	中上級文法 II	中村	3C	K6	IV-1f	中上級ストラテジー読解 II	津留	2D					
K5	III-2w	中級後半作文	吉里	2D	K6	IV-1x	ビジネス日本語ライティング A	道本	2C					

【Full-time instructor】

MASDEN, Mariko (マスデン)

【Full-time instructors, Project Faculty】

KASHIMA, Megumi (鹿嶋)

YOSHISATO, Sachiko (吉里)

【Full-time instructors, CDP+K Project Faculty】

HIRANO, Teiji (平野)

【Part-time instructors】

AKAKI, Shouko (赤木)

EZAKI, Tsuneyo (江崎)

Ooba, Rieko (大庭)

KATAYAMA, Kiyomi (片山)

KOGA, Michiru (古賀)

KOSAKA, Reiko (小坂)

SADANAGA, Yuuko (定永)

TSURU, Noriko (津留)

NAKAMURA, Naomi (中村)

HINOKURA, Tomoko (日隈)

MICHIIMOTO, Yuuko (道本)

YONAWA, Tomoko (與縄)